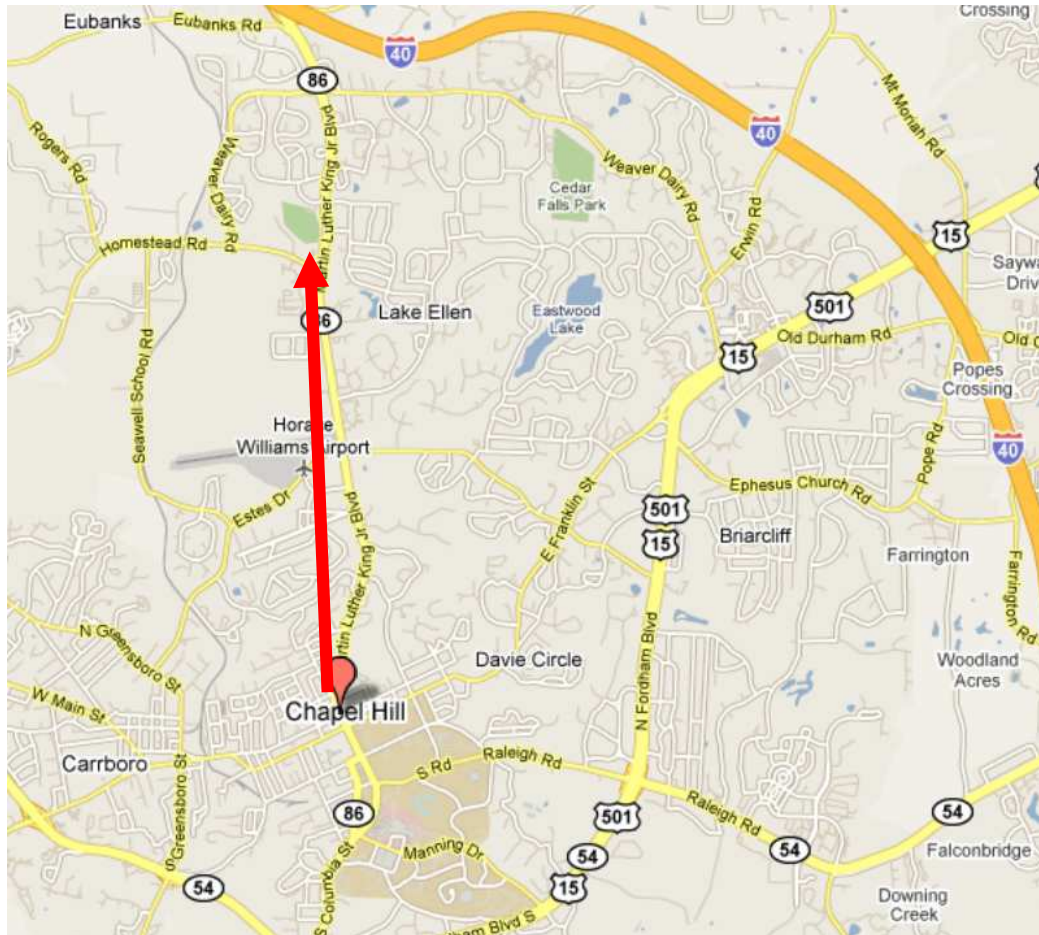




Relocation of Chapel Hill's Men's Homeless Shelter

abettersite.org

Proposed Men's Shelter



In 2009 UNC purchased land at the corner of MLK and Homestead

UNC will lease the land to The Town of Chapel Hill who will sub-lease it to The Interfaith Council

The new 16,000 square foot men's shelter will house 52 transitional beds and up to 70 emergency beds

It's the only men's shelter in Orange County



No Public Process to Select Site

“Back Room Deal” Secures Land

- ⊗ No transparency nor public process in selecting the current proposed site for the men’s shelter relocation
- ⊗ Town staff performed the search for the county’s only men’s homeless shelter with no public notice and with no public input, using only the IFC’s list of requirements
- ⊗ Land deal was sent to the Governor through the Council of State for approval without approval or knowledge from the town council
- ⊗ Site would be “illegal” in many cities that have land use management ordinances

New Men's Shelter

Much Bigger than Just a Transitional Facility

Emergency spaces on floor will open up on “white flag” nights - rainy nights and nights under 40 degrees

National Data Service weather data for 2009 show over 200 emergency nights existed in 2009

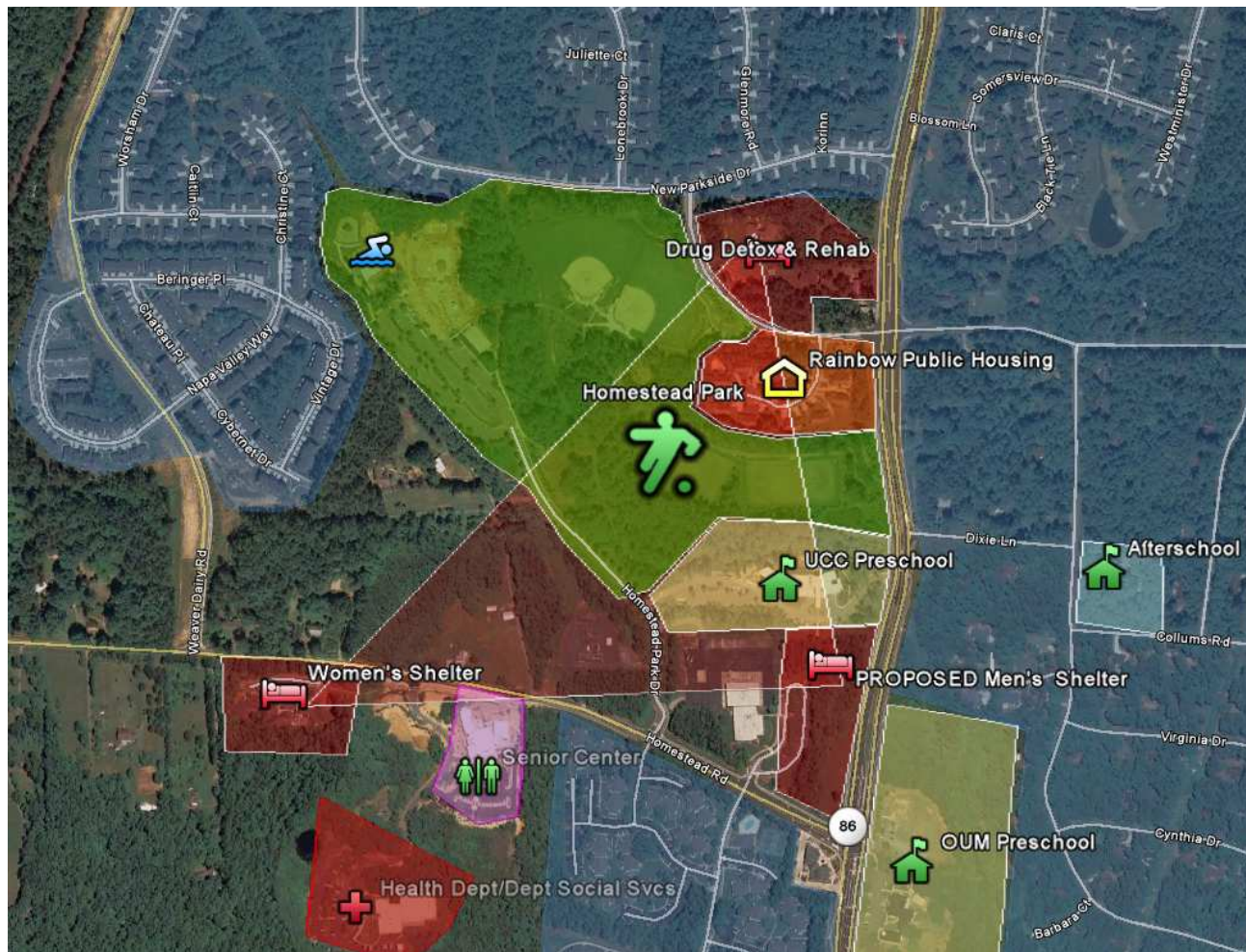
Shelter could hold an additional 70 men on emergency nights

Where will these men go in the morning?

YEAR	MO	DY	MAX	MIN	RAIN	<=40?	>=95?	RAIN?	white flag?
2009	1	1	42	23	0	TRUE	FALSE	FALSE	TRUE
2009	1	2	42	27	0.05	TRUE	FALSE	TRUE	TRUE
2009	1	3	58	32	0	TRUE	FALSE	FALSE	TRUE
2009	1	4	56	43	0.62	FALSE	FALSE	TRUE	TRUE
...									
2009	12	30	38	23	0.07	TRUE	FALSE	TRUE	TRUE
2009	12	31	46	32	0.11	TRUE	FALSE	TRUE	TRUE
						103	20	128	
WHITE FLAG NIGHTS									206

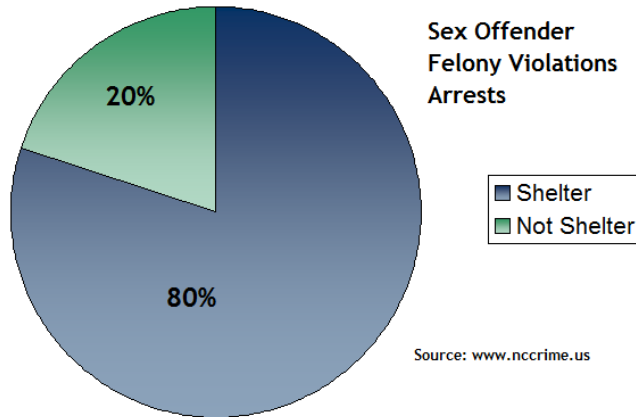
Compromise Neighborhood Safety

New shelter will be in close proximity to schools, parks



- Three preschools
- Two afterschool programs
- Homestead Park
 - soccer
 - baseball
 - playgrounds
- 13 Neighborhoods
 - 1,700 homes
 - 3 mobile home parks
 - 900 student beds at Chapel Ridge/Chapel View
- Senior center
- Other at-risk facilities

Shelter will bring Homeless Sex Offenders to Area



80% of registry violation's occurred at the men's shelter

A registry violation is when a offender does not register their current address with the Sheriff's Dept. or update a new address.

The proposed shelter is within 1,000 ft. of three schools. This is so close that laws restricting sex offenders will prevent them from legally staying at the shelter.

Location will deny shelter for men who need help

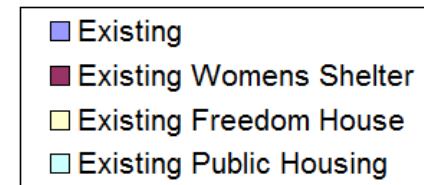
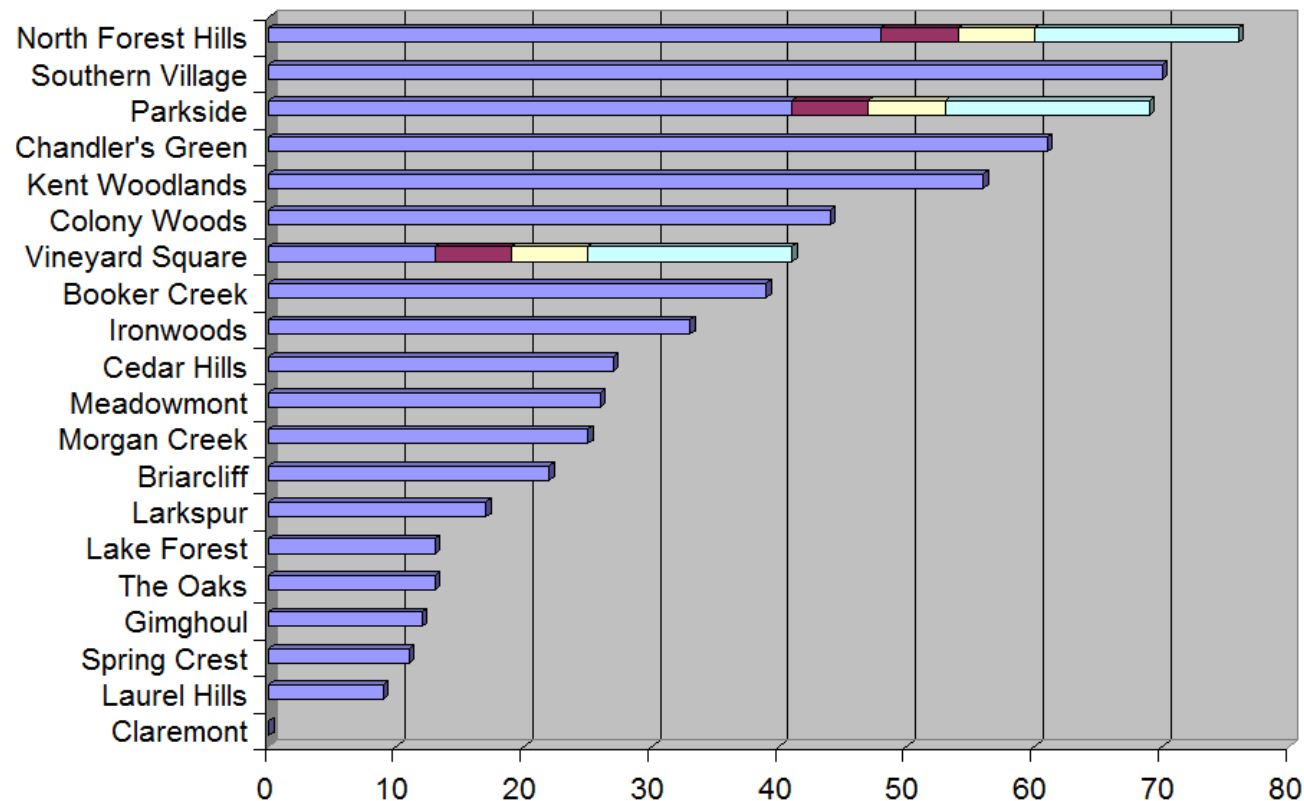
Cold nights could bring sex offenders to shelter anyway regardless of laws

Intake procedures on white flag nights don't check criminal history

Public Housing and Existing Facilities Give Area More Crime Than Other Neighborhoods

Current Neighborhood Person Crime with existing at-risk social services
(Area considered is one half of a square mile)

The blue bars show “person” crime for each neighborhood. The shadings represent crime added by public housing and at risk facilities

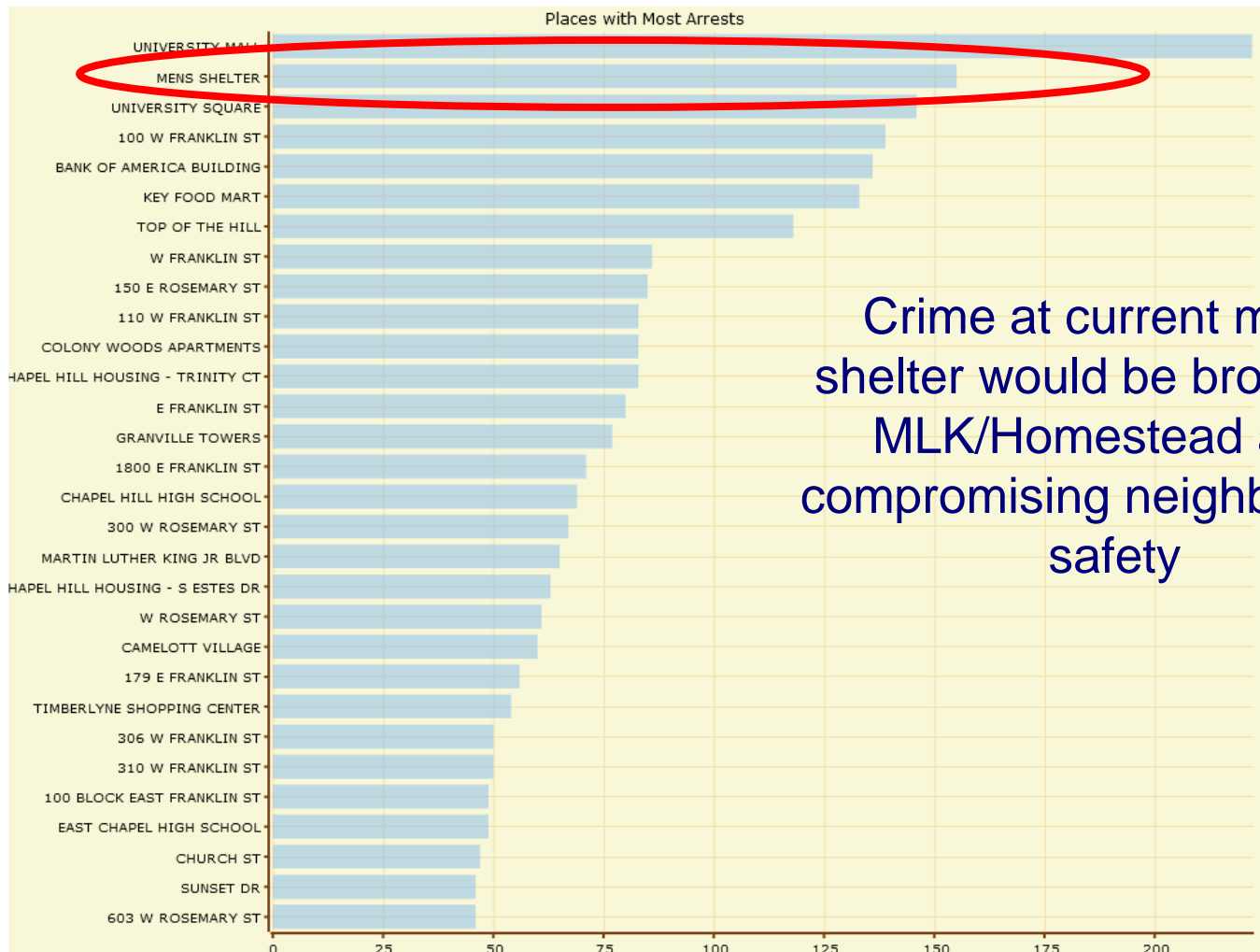


Source: www.nccrime.us

crime since 2003

High Arrest Rate at Men's Shelter

According to Data from The Chapel Hill Police Department



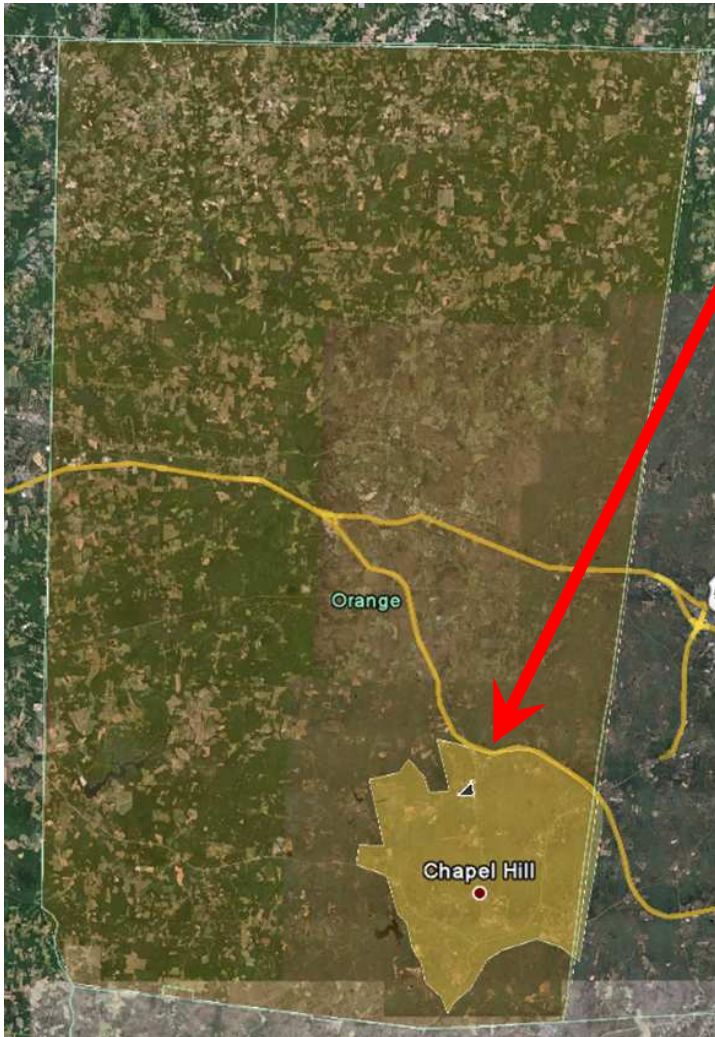
Crime at current men's shelter would be brought to MLK/Homestead area compromising neighborhood safety

Source: www.nccrime.us

crime since 2003

No Responsible Growth for North Chapel Hill

North Chapel Hill will be home to all at-risk social services

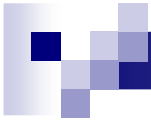


The small triangle shows all overnight social services for at risk populations in Orange County

- Women's Shelter
- Freedom House
- Proposed Men's Shelter

Services should be distributed throughout the community in a “scattered site approach”

Chapel Hill has no “fair share” rules to prevent over concentration of supportive housing in neighborhoods.

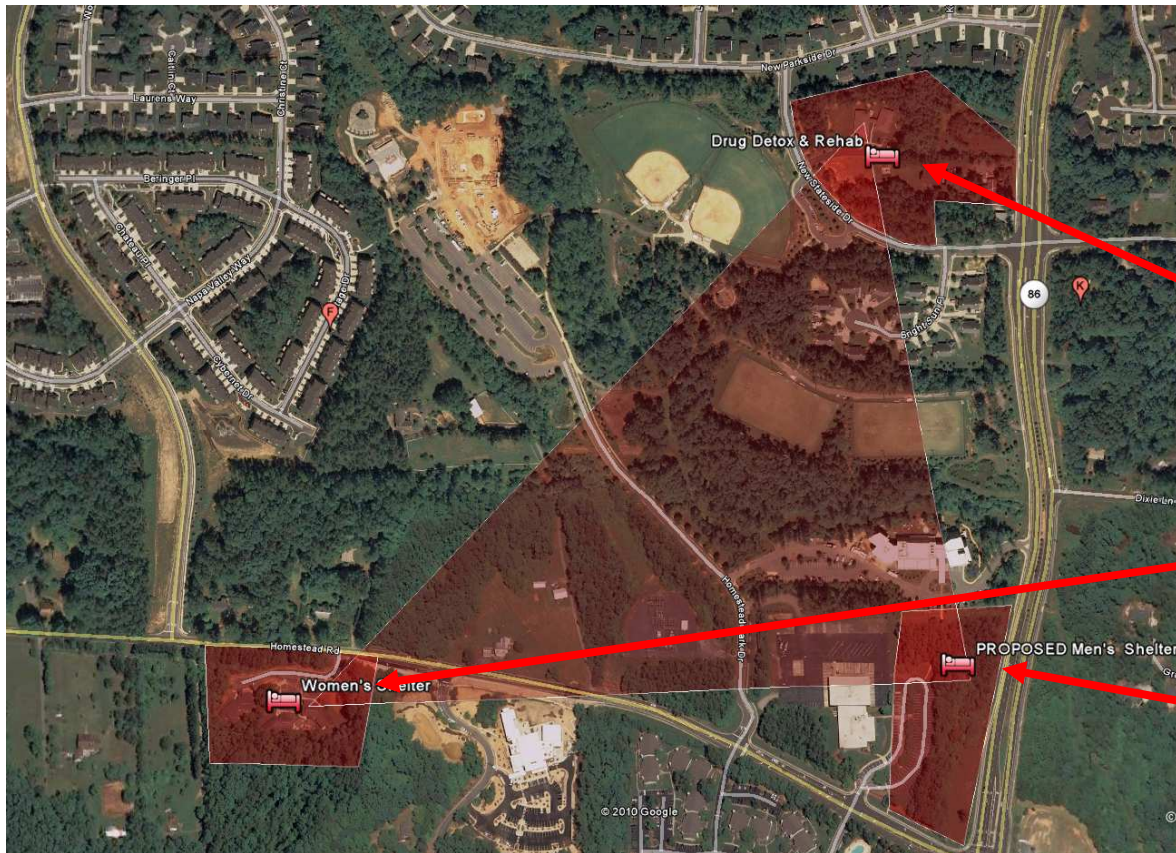


It All Adds Up

Hundreds of beds within a few minutes walk

Women's Shelter	40 transitional beds 16 emergency beds
Freedom House	16 detox beds 22 half way beds
4 Oxford Houses	29 half way beds
	<hr/> 123 current beds
Proposed Men's Shelter	32 transitional beds 20 emergency beds 17-70 white flag night beds
	<hr/> 242 possible beds

Lack of Affordable Housing and Cuts in Mental Services Budget will Create Growth for Existing Facilities



Since there are no other overnight facilities in Orange County, existing facilities will grow

Freedom House already provides 22 bed half-way house, 800+ detox clients/yr and over *6,000 clients served

The Women's Shelter has not been expanded yet...

Relocation criteria for men's shelter includes room for expansion

The red Triangle is one tenth of a square mile
Too small an area to house all services

* clients for all locations (no data on separate locations)



We Need *a Better Site* for the New Men's Homeless Shelter

Compromises Neighborhood Safety

- ⊗ Too close to schools, parks and neighborhoods
- ⊗ 16,000 sq. ft. site will house both transitional and emergency beds

Ignores Responsible Growth

- ⊗ No fair share, puts all hundreds of emergency and at-risk beds within 1/10 of a sq. mile.
- ⊗ Area already slated for 17 new projects and massive UNC project Chapel Hill North.

Rejects Public Process / Denies Political Transparency

- ⊗ Lack of public process or citizen input, no public site search criteria
- ⊗ This is a back room deal with no transparency for this process